



# BANGALORE

Electrical Switchgear Assembly LLC.,



ISO 9001:2008 Certified

*"BESA Brings Vision to Reality"*



**SIEMENS**

**ABB**

**Schneider**  
Electric

*Danfoss*

**Himel**

BANGALORE ELECTRICAL SWITCHGEAR ASSEMBLY LLC

SHARJAH INDUSTRIAL AREA 12, PO BOX : 37010, SHARJAH, UAE.

Tel : +971 6 5399004 / Fax : +971 6 5399007 / Email : [info@besauae.com](mailto:info@besauae.com) / Website : [www.besauae.com](http://www.besauae.com)

# INTRODUCTION

Welcome Bangalore Electrical Switchgear Assembly LLC

Specialized Traders & Manufacturers of Industrial Automation products in UAE.

We take great pride in introducing our Company as one of the young regional market leader in Industrial Automation and Trading of Switch Gear components. We caters to all industrial needs of UAE and Middle East.

We deliver integrated engineering through design and built in infrastructure with Efficient Innovative and a Dynamic team which executes with great dedication for customers satisfaction. Which Complements our solutions ranging from small factory to turn key projects.

Serving our client in emergency and delivering our best support has gained good will and confidence of our customers.



18th Century

## Industry 1.0

Mechanical production.  
Equipment powered by  
steam and water

19th Century

## Industry 2.0

Mass production assembly  
lines requiring labor and  
electrical energy

20th Century

## Industry 3.0

Automated production  
using electronics and IT

Today

## Industry 4.0

Intelligent production  
incorporated with IoT, cloud  
technology and big data



## Our Vision

**“Our vision is to focus on environmental activities to benefit society.**

**We are committed ourselves as reputed supplier of high quality solutions”**

## Our Mission

Our mission be the UAE's leading Electrical Automation Company focused on customer satisfaction. We seek to produce increased financial rewards and provide opportunities for growth and enrichment to employees, striving for honesty, reliability and integrity within the Company..

## Our Values

BESA believes that excellent service is “Pillar to Success”. Serving our client in emergency and delivering our best support has gained good will and confidence of our customers. We strive to support our customers in their Business always.

---

## BESA Believes “Pillar to Success”



- Requirements, definitions, system architectures design and planning
- Requirement Analysis and data modeling for information systems, instruments, power distribution, motors, industrial communications, constructions, etc.
- End to End integration for hardware & software engineering
- Detailed drawings and Bid Specifications
- Configuration and programming
- Application software development
- Integration for all control subsystems for real time process environment
- Documents and maintenance drawings, such as loop drawings and O&M Manuals
- Operations & Maintenance Support
- Annual maintenance contract & life cycle business

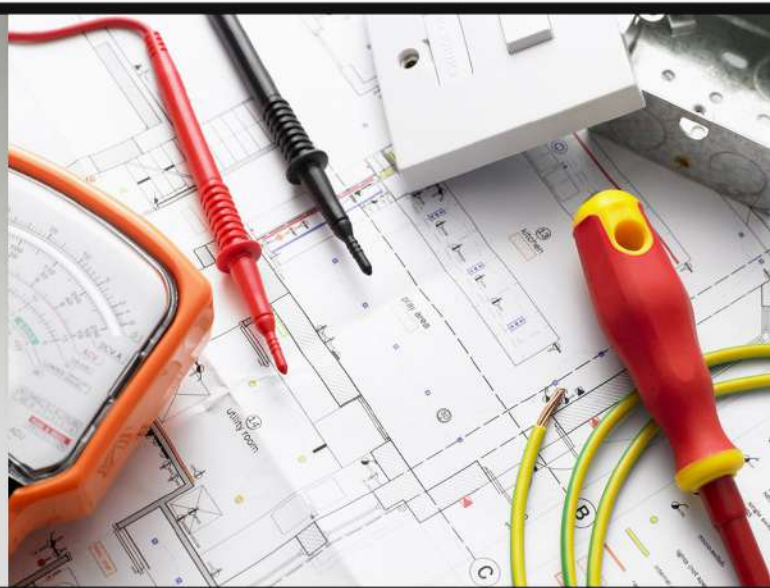
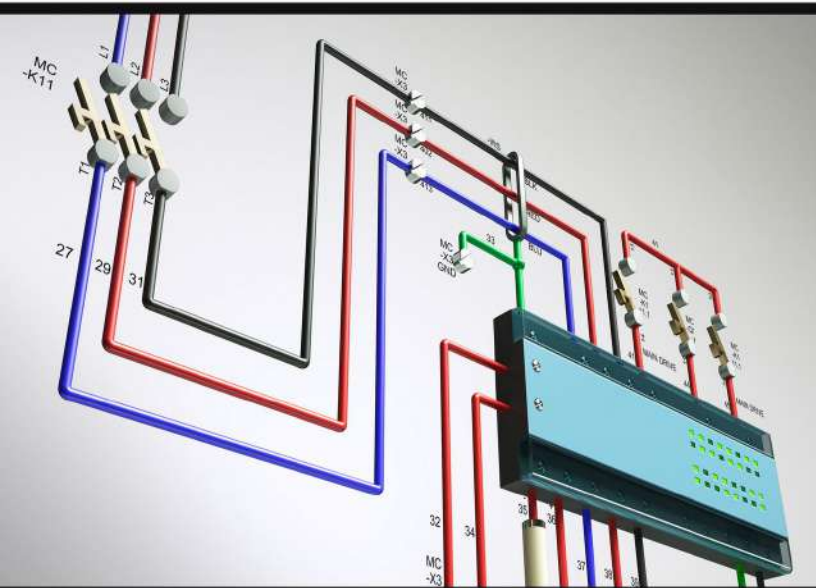
# OUR EXPERTISE

BESA strongly believes in quality of product , its efficiency and overall performance, our team never fails to choose right quality of products that are used for manufacturing, Our wide range International certified brands ensures excellent quality as well as durable performance, Our products are highly prioritized and appreciated by clients. our products are demanded in diverse industrial segments and are coupled with Electrical Engineering and Automation, we constantly do research work to update ourselves to meet tailor made demands.

## Engineering Design/Development

BESA is pioneer in Designing and Engineering solution, our dynamic team with flawless Engineering, Design and Manufacturing ability supplies wide range of panels to ease customer by non tedious process to achieve the best and promise manifold value to their investments. we abide to complete your engineering in very professional and ethical way by providing our guidance and constant advise to make necessary changes for highly sophisticated system which run at TOUCH or REMOTE effortlessly.

- System Design & Engineering
- Automation
- Control & Instrumentation
- SCADA Development
- PLC & HMI Programming
- Complete Documentation as per Standards





## Control Panel

- PCC/MCC Panels
- SCADA/HMI/PLC Based Panels
- VFD & Soft starter Panels
- Pump Control Panel
- Swimming Pools & Fountain Panels
- Chilled & Condensed Water Panels
- Chlorination Panel
- Generator Synchronizing Panels
- AMF/ATS Panels
- Weighing & Filling Control Panel



## Power Distribution

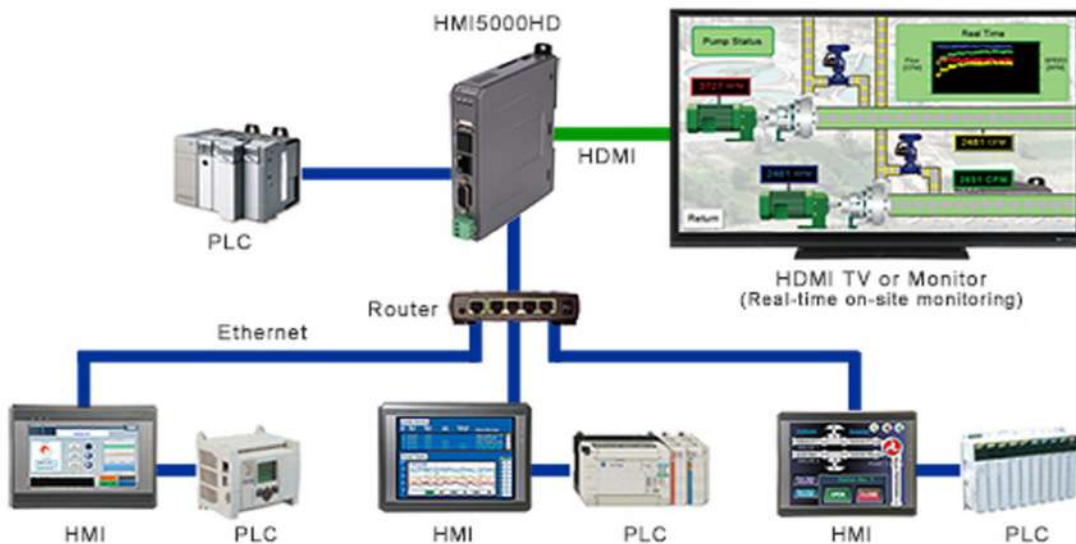
- LV Panel (Form 2, 3, 4)
- MDBs (Main Distribution Boards)
- SMDBs (Sub-Main Distribution Boards)
- DBs
- Capacitor Bank Panel (With Harmonic)
- Capacitor Bank Panel (Without Harmonic)
- Power Factor Panel (Auto/Manual/APFC)
- Feeder Pillar
- ATS and Other Customized Panel





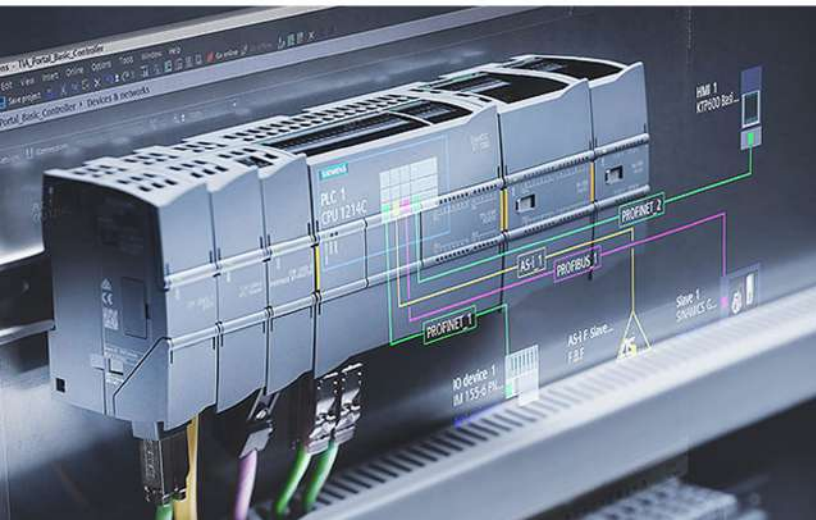
## PLC AND SCADA INTEGRATION SERVICE

BESA maintains an experienced staff of SCADA and PLC Integration specialists. These professionals possess the skills required to program and commission your control system. Our staff is familiar with all of the major equipment manufacturers and is committed to continually educating themselves with technological advances and new platforms.



## PLC PROGRAMMING SERVICES

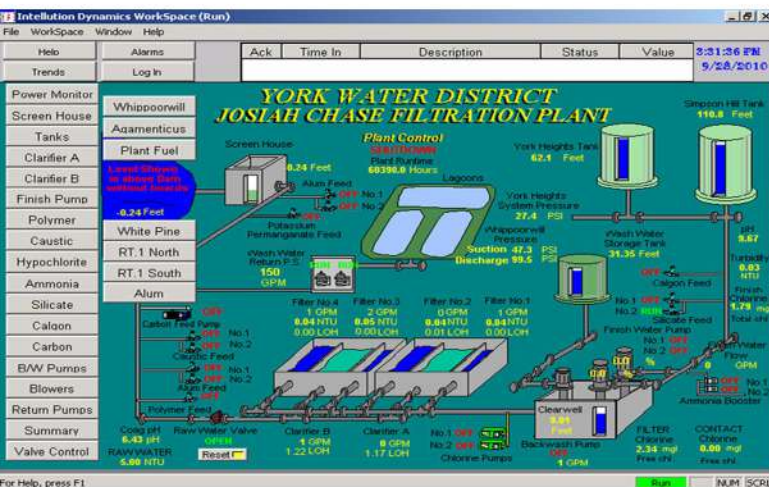
- Expertise on all major PLC manufacturers-Siemens,schneider, Allen Bradley, ABB,etc
- Experienced in open and proprietary communication protocols
- Local and distributed PLC control and communications which includes both process control and remote I/O
- Complete PLC program verification and checkout process for the PLC control panel provided by BESA prior to shipment.





## SCADA Configuration and Programming Services

- Expertise in all major SCADA software manufacturers
- Stand-alone and Server-Client distributed process monitor and control architectures
- Microsoft SQL-based database collection and reporting Capabilities
- SCADA Telemetry & Remote Monitoring Operations
- Communicate Through RTU(Remote Terminal Units), PLC and Other Field Devices.



## HMI (Human -Machine Interface) Programming Services

- Experienced in graphical development & interfaces
- Phone & modem configuration
- Alarm monitoring & control devices
- Communicate Through PLC & Other Field Devices





## Variable Frequency Drives(VFDs)

- We handle, Install & Program all Major Brands of VFDs.
- RS232/MODBUS Communication to PLC & Other Field devices.
- VFD Troubleshooting & Services.



## Field Services

BESA believes that excellent service is "Pillar to Success". Serving our client in emergency and delivering our best support has gained good will and confidence of our customers. We strive to support our customers in their Business always. For the same BESA employs have received compliments several times.

- Process automation, trouble shooting of PLC/SCADA/HMI programming, upgrading system, etc
- Installation of instruments and equipments
- Supply of equipments, Instruments, Calibration, testing and Commissioning.
- Yearly maintenance of system
- 24/7 after sales support

**Field Services**  
On-site to Serve you Better





## Switchgear Products

- MCB, MCCB, RCD/RCCB, ELCB , MPCB Contactor, OLR, Soft Starter, TBs, Limit switch, Relay, Sensors, Timers, Counters, Panel lamps, Transformer, IP Enclosure ,Isolator, Panel fan, PBs.



## Industrial Automation Products

- Programmable Logic Controller(PLC)
- SCADA Systems
- Variable Frequency Drives (VFD)
- Servo Drives & Motors
- Remote Terminal Units (RTU)



## Cables, Trays, Glands & Accessories

- Rubber Flexible &PVC Flexible Cable
- Armoured Cable(SWA & AWA)
- Control Cables, Instruments Cable
- Cable Trays & Accessories
- Cable Glands & Other Accessories



## Waste Water Treatment Equipments

- DAF System, Flocculator
- Sensors, Flow Meters
- Float Switch
- PH Meter
- Conductivity Meters



## Electro-Mechanical Products

- Pumps(Submersible, Domestic. Dosing)
- Induction Motors & Blowers
- Weighing Systems
- Valves



## Industrial UPS Systems

- Product ranges from 1 KVA to 200 KVA Usable in Various Manufacture Industry Product available 1 Ph/3 Ph Systems Software Based Backup from Primary Loss.





# PRESTIGIOUS PROJECTS OF BESA

## DESIGN, ASSEMBLE, PROGRAM, SUPPLY, INSTALLATION & COMMISSIONING OF:-

SL:NO	PROJECT NAME	PROJECT
1	Black Forest, Kizad -Abu-Dhabi	Pre Filtration System Control Panel
2	Black Forest, Kizad -Abu-Dhabi	Waste Water Treatment Plant Control Panel
3	Al-Shaya – Dubai	Waste Water Treatment Plant Control Panel
4	Ikea-Bahrain	Water Treatment System Control Panel
5	Marriot Hotel, Riyadh, KAS	Grey Water Treatment System Control Panel
6	One & Only Hotel – Bahrain	Domestic Water Treatment System Control Panel
7	Katsuya – Madinat Jumeirah –Dubai	Water Treatment System Control Panel
8	Holiday Hotel –Dubai	Filtration System Control Panel
9	Wafi – Mall ,Dubai	UF & RO System Control Panel
10	Al-Khoud ,Oman	Water Treatment system Control Panel
11	Antigua, West Indies	Sea water Treatment System Control Panel
12	Al-Bwardy ,Ethiopia	Filtration System Control Panel
13	Blue Water Hospital, Dubai	Bag Filter Control Panel
14	DAMAC Properties, Dubai	Condenser Water Control Panel
15	W-Hotel & Residence Tower	Grey Water Treatment System Control Panel
16	Burjeel Day care Centre	RO System Control Panel
17	Dhofar Beach Resort	Main Water Control Panel, Grey water Treatment System Control Panel
18	Mersa AL-Seep Star Hotel	Domestic Water Treatment System Control Panel
19	Chees Cake Factory – Riverland	RO System Control Panel
20	Sobha Hartland	Grey Water Treatment System
21	Medcare Hospital -Dubai	Effluent Neutralisation System Control panel
22	Al-Maryah Hall	Chilled water control panel
23	AL-Khail Avenue Mall	Laboratory water Neutralization system control panel
24	Babel Avenue Mall –Bahrain	Water treatment system control panel
25	Ajman City Centre	Domestic Water Treatment System
26	Amphi Theatre-5d Ciniflesh- ABU Dhabi	Water treatment System Control Panel
27	Cheese Cake Factory –Dubai	Pump control Panel
28	Dev Avenue -Bahrain	WTS Control panel
29	Starbucks Avenue –Bahrain	Ro system control panel
30	Asha Avenue –Bahrain	WTS Control Panel
31	IHO Avenue Mall-Bahrain	WTS Control Panel
32	Jumeirah Open Beach	Circulation Control Panel
33	Katsuya Dubai mall	WTS control panel
34	GH-Alain	RO system control panel
35	W-Hotel, Palm Jumeirah	Water Filtration Systems



# Domain of Expertise



**Water Treatment**



**Waste Water Treatment**



**Food & Beverages**



**Construction**



**Swimming Pools**



**HVAC Systems**



**Conveyor**



**Cement**



**Plastics**



**Paper & Pulper**



**Steel**



**Chemical Process**



**Boiler Control**



**Concrete Batching & Mixing**



**Industrial Furnace & Ovens**



**Commercial Laundry**

**BANGLORE ELECTRICAL SWITCHGEAR ASSEMBLY LLC**

**SHARJAH INDUSTRIAL AREA 12, PO BOX : 37010, SHARJAH, UAE.**

**Tel : +971 6 5399004 / Fax : +971 6 5399007 / Email : [info@besauae.com](mailto:info@besauae.com) / Website : [www.besauae.com](http://www.besauae.com)**